


An aerial photograph of a forest with a prominent green rectangular text box in the upper center. The forest floor is covered in a dense layer of fallen leaves and branches, creating a complex, textured pattern of brown, tan, and grey. The green text box is semi-transparent, allowing the forest texture to be visible through it.

# Otsego County HAB Safety website

<https://otsegocountyhabs.com/>



# Site development and informational sources

- One of the main takeaways from the May HABs meeting was the need for a centralized source of information for people living in and visiting Otsego County
  - Emphasis placed on reliable and accessible sources, such as DEC, CDC, and NOAA
  - Contributions from local experts provide useful information specific to our lakes
- 

# Site contents

## Otsego County HAB Safety

[HOME](#)   [REPORT](#)   [OTSEGO LAKE](#)   [CANADARAGO LAKE](#)   [GOODYEAR LAKE](#)   [FAQ](#)

- Sections with resources for each of the large lakes
- Links to NYHABs mapping tool, reporting pages, etc
- FAQ
- Images of what HABs can look like and things commonly mistaken for HABs
- Quick link to reporting to both DEC and NYS Department of Health





## Who

Harmful Algal Blooms can affect both humans and pets

[LEARN MORE](#)



## What

What is a Harmful Algal Bloom and how to spot them.

[SPOT RISKS](#)



## Where

What Otsego County Watersheds have been affected?

[FIND OUT](#)



## Science and resources

Dig into the science behind HABs and what local, state, and federal organizations are working on

[SEE DATA](#)

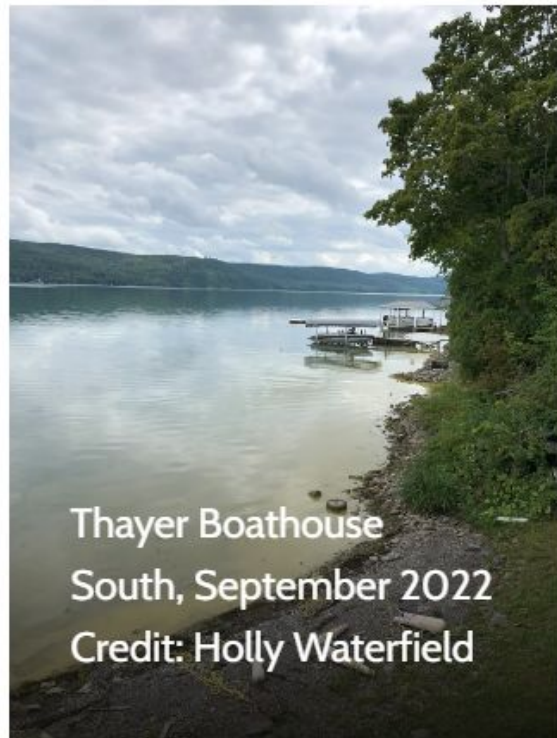
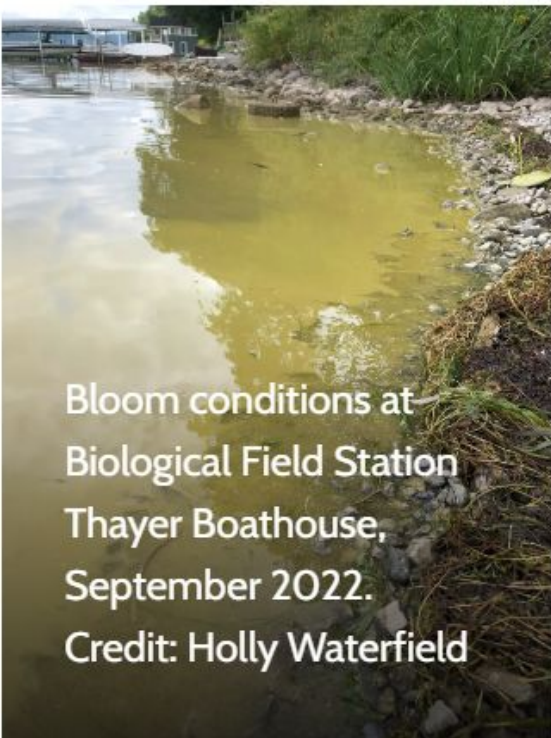


## How to Help

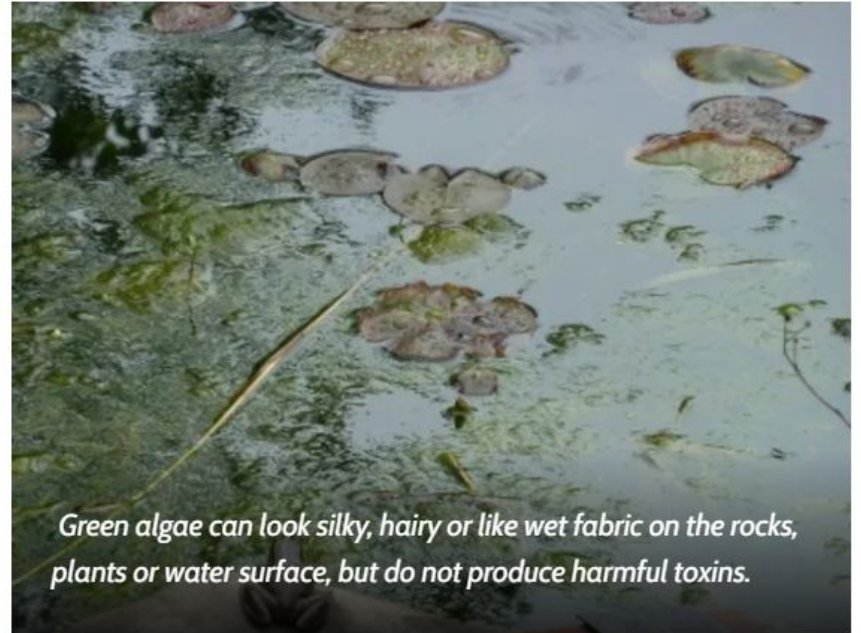
How can you help get the word out about HABs and what to do about them

[LEARN MORE](#)

HARMFUL ALGAL BLOOMS CAN LOOK LIKE (FROM DEC HABS PHOTO GALLERY,  
AND CANADARAGO LAKE IMPROVEMENT ASSOCIATION)



OFTEN MISTAKEN FOR HARMFUL ALGAL BLOOMS (FROM DEC HABS PHOTO GALLERY)



## Report Harmful Algal Blooms to DEC

If you suspect that you have seen a HAB, please report the HAB to DEC. Fill out and submit a [Suspicious Algal Bloom Report Form](#). If possible, attach digital photos (close-up and landscape to show extent and location) of the suspected HAB in the web form. Email [HABsInfo@dec.ny.gov](mailto:HABsInfo@dec.ny.gov) if you are not able to complete the form.

DEC REPORTING FORM


## Report suspected exposures to NYS Department of Health

If you suspect someone has been exposed to toxins from a harmful algal bloom, please notify the NYS Department of Health using the email below.

This email is not immediate help. If you are experiencing symptoms of exposure, talk to your healthcare provider or contact a [poison control center](#) right away. Let them know that you might have recently come in contact with cyanobacteria or its toxins. Information about the suspected cause of your illness might help your healthcare provider manage your symptoms.

HARMFULALGAE@HEALTH.NY.GOV





Can I kayak when there is a harmful algal bloom? ▼

---

What should I do when I see a harmful algal bloom? ▲

Harmful algal blooms should be reported to DEC via the [Suspicious Algal Bloom Report Form](#). If possible, attach digital photos (close-up and landscape to show extent and location) of the suspected HAB in the web form. Email [HABsInfo@dec.ny.gov](mailto:HABsInfo@dec.ny.gov) if you are not able to complete the form.

---

What should a person do if they came in contact with a lake with a harmful algal bloom? ▼

---

What should I do if my pet was exposed to a lake with a harmful algal bloom? ▼

---

Where can I find out more about harmful algal bloom research? ▼

---

Why are HABs occurring more frequently in lakes? ▼

---



## Limitations of the site

1

Cannot provide real-time information about the safety of our lakes

2

Not accessible to those without internet access

3

Requires promotion as a resource

# Benefits of otsegocountyhabs.com

1

Synthesizes content from state and federal agencies as well as local experts

2

Contains many example photos of local HABs, which vary in appearance from location to location

3

Links to reporting forms and resources that many people would be unaware of

4

Demonstrates the collaborative approach to addressing HABs in Otsego County

**Thanks to our partners! Please  
visit and share our site:  
<https://otsegocountyhabs.com/>**

Partners in developing this site



**SUNY  
ONEONTA**

